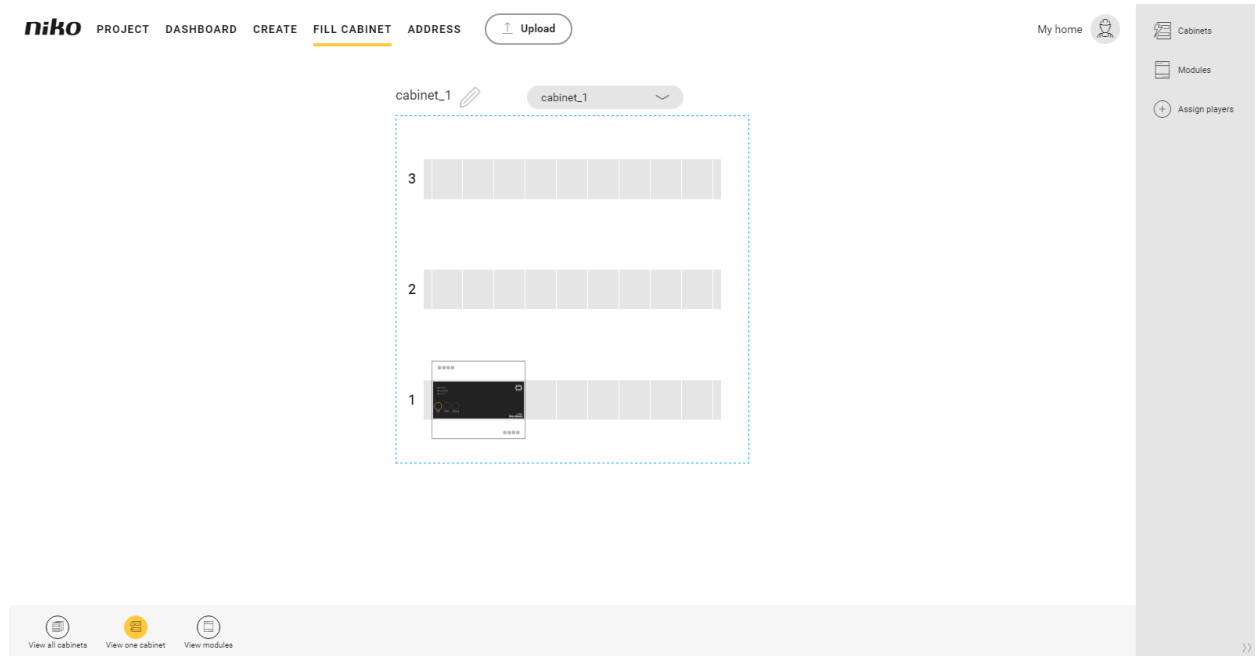


Ajouter un module

Starting point

- You have created at least 1 cabinet.
- You are in the **Fill cabinet** overview window.

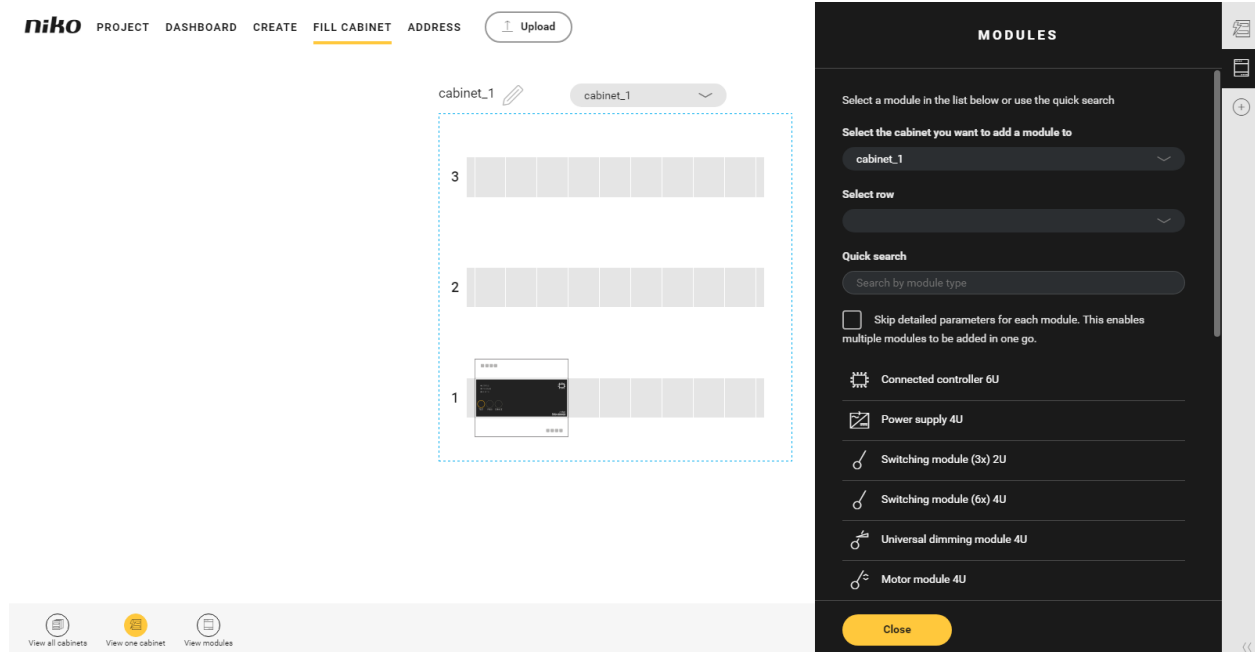


Procedure

1. In the right-hand button bar, click on the button **Modules**.

Result:

The **Modules** pane appears and shows the different types of modules.

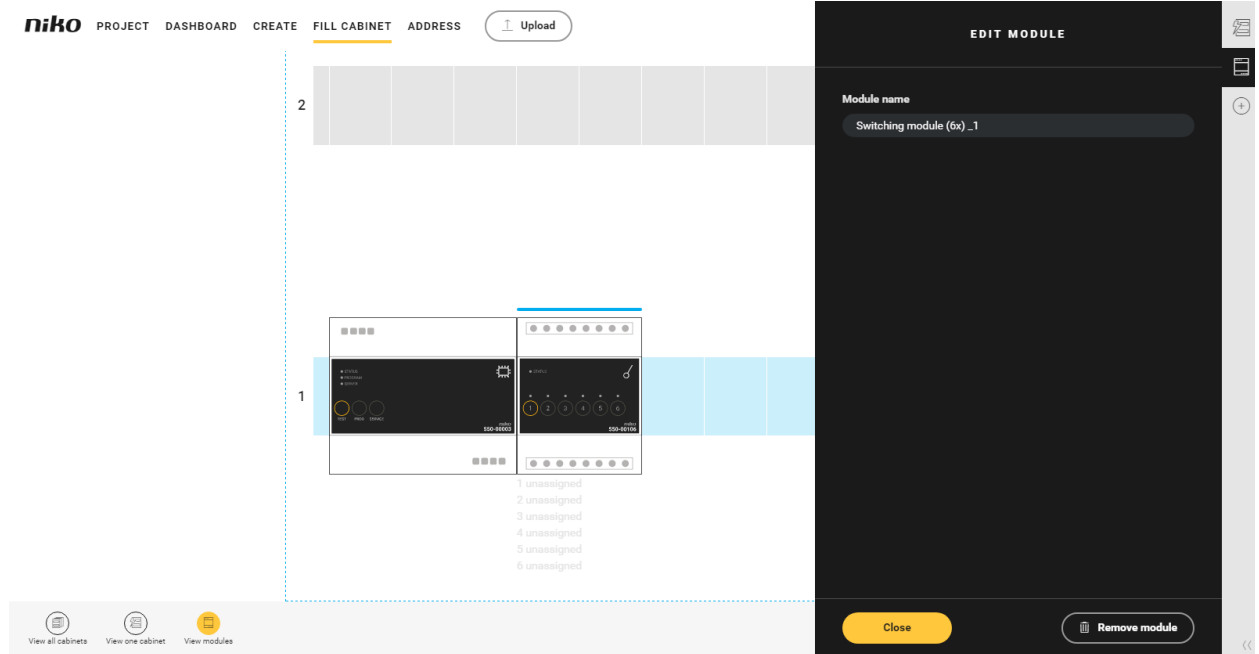


2. You now have the choice:
 - If you tick the selection box **Skip detailed parameters for each module**, you can quickly add several modules by clicking on them. You can change the name later.
 - If you untick the selection box **Skip detailed parameters for each module**, you can change the name immediately.
3. Choose a cabinet at the top of the pane or click on the cabinet to which you want to add a module.
4. Choose a row of the cabinet in the pane or click on the desired row of the cabinet.

5. Select the desired module.

Result:

The **Edit module** pane appears and shows the name of the module.



6. If you wish, you can change the name of the module.

7. Click on **Close** to return to the **Modules** pane.

8. Click on **Close** to return to the **Fill cabinet** overview window.

Use the buttons in the selection bar at the bottom to:

- display all cabinets
- display one cabinet
- display modules.